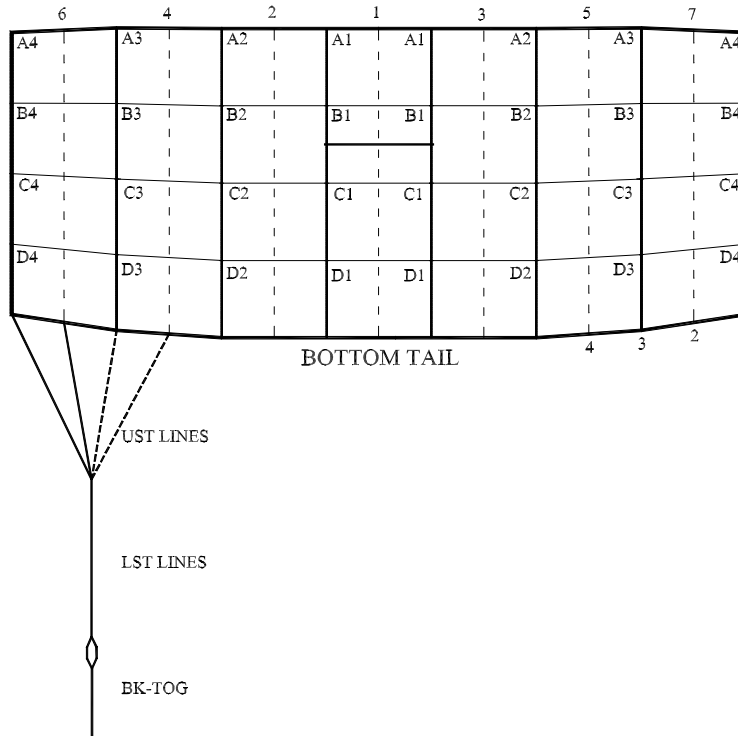




Performance Designs, Inc.
 1300 E Int'l Speedway Blvd
 DeLand FL 32724
 Telephone: 386-738-2224
 Fax: 386-734-8297

LINE TRIM CHART
FOR
SPECTRE 097 - 135



	SP-097	SP-107	SP-120	SP-135
A1	95 7/8	100 5/8	106 1/2	113 3/8
A1-B1	2 1/4	2 1/4	2 1/2	2 5/8
A1-C1	7 3/4	8 1/8	8 3/4	9 1/2
A1-D1	15 3/8	16 1/8	17 3/8	18 5/8
A2	95 7/8	100 5/8	106 1/2	113 3/8
A2-B2	2 1/4	2 1/4	2 1/2	2 5/8
A2-C2	7 1/2	7 7/8	8 1/2	9 1/8
A2-D2	15 1/4	16	17 1/8	18 3/8
A3	95 3/4	100 5/8	106 1/2	113 1/4
A3-B3	2 1/8	2 1/8	2 3/8	2 1/2
A3-C3	6 7/8	7 1/4	7 3/4	8 3/8
A3-D3	14 1/4	15	16 1/8	17 3/8
A4	95 3/4	100 1/2	106 3/8	113 1/4
A4-B4	2 1/8	2 1/8	2 3/8	2 1/2
A4-C4	6	6 3/8	6 7/8	7 3/8
A4-D4	12 5/8	13 3/8	14 3/8	15 1/2
LST	67 1/8	70 1/2	74 5/8	77 3/8
A4-UST1	7 1/4	7 5/8	7 1/4	6 3/4
A4-UST2	7 1/4	7 5/8	7 1/4	6 3/4
A4-UST3	7 1/4	7 5/8	7 1/4	6 3/4
A4-UST4	7 1/4	7 5/8	7 1/4	6 3/4
B STAB SLK	1/2	1/2	1/2	1/2
C STAB SLK	1	1	1	1
D STAB SLK	1 1/2	1 1/2	1 1/2	1 1/2
BK-TOG*	19 1/8	22 1/8	21 1/8	23 3/8
Channel Slider	20" Chord	20" Chord	20" Chord	21" Chord
	31" Span	31" Span	31" Span	31" Span

*Due to development methodology, the finished BK-TOG dimensions may not scale