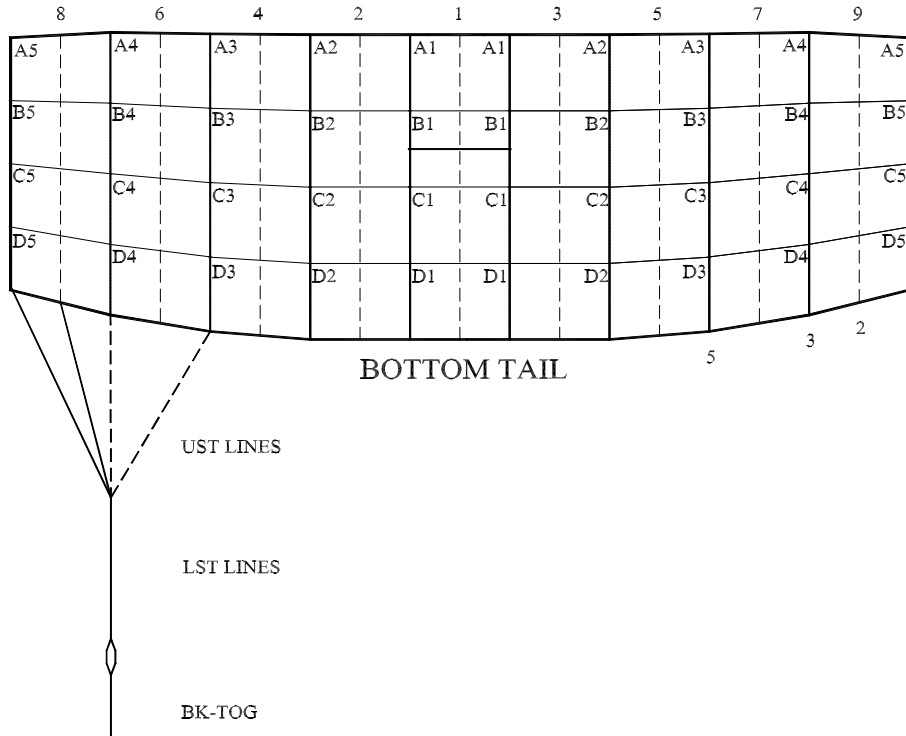




Performance Designs, Inc.  
 1300 E. Int'l Speedway Blvd  
 DeLand FL 32724  
 Telephone: 386-738-2224  
 Fax: 386-734-8297

**LINE TRIM CHART**  
**FOR**  
**SILHOUETTE 190 - 260**



	SI-190	SI-210	SI-230	SI-260
A1	145 1/4	152 5/8	159 3/4	164 3/4
A1-B1	2 3/4	3	3	3 1/8
A1-C1	9 7/8	10 3/8	10 3/4	11 1/2
A1-D1	19 3/8	20 1/2	21 1/8	22 5/8
A2	145 1/4	152 5/8	159 3/4	164 3/4
A2-B2	2 3/4	3	3	3 1/8
A2-C2	9 7/8	10 3/8	10 3/4	11 3/8
A2-D2	19 1/4	20 3/8	21 1/8	22 1/2
A3	145 1/4	152 5/8	159 5/8	164 3/4
A3-B3	2 5/8	2 7/8	2 7/8	3
A3-C3	9 1/2	10	10 3/8	11
A3-D3	18 3/4	19 7/8	20 1/2	21 7/8
A4	145 1/8	152 1/2	159 5/8	164 5/8
A4-B4	2 1/2	2 3/4	2 5/8	2 7/8
A4-C4	8 5/8	9 1/8	9 3/8	10 1/8
A4-D4	17 1/4	18 3/8	18 7/8	20 1/4
A5	145	152 3/8	159 1/2	164 1/2
A5-B5	2 3/8	2 5/8	2 5/8	2 3/4
A5-C5	7 5/8	8	8 1/4	8 7/8
A5-D5	15 1/8	16	16 5/8	17 3/4
LST	108	112 1/2	118	121 3/4
A5-UST1	11 7/8	11 5/8	12 5/8	14 7/8
A5-UST2	11 7/8	11 5/8	12 5/8	14 7/8
A5-UST3	11 7/8	11 5/8	12 5/8	14 7/8
A5-UST5	11 7/8	11 5/8	12 5/8	14 7/8
B STAB SLK	1/2	1/2	1/2	1/2
C STAB SLK	1	1	1	1
D STAB SLK	1 1/2	1 1/2	1 1/2	1 1/2
BK-TOG*	19	19 7/8	21 5/8	20 5/8
Channel Slider (FP/FS fabric)	23" Chord 31" Span	23" Chord 31" Span	23" Chord 31" Span	23" Chord 31" Span

\*Due to development methodology, the finished BK-TOG dimensions may not scale