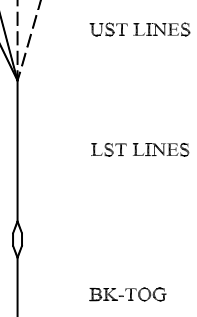
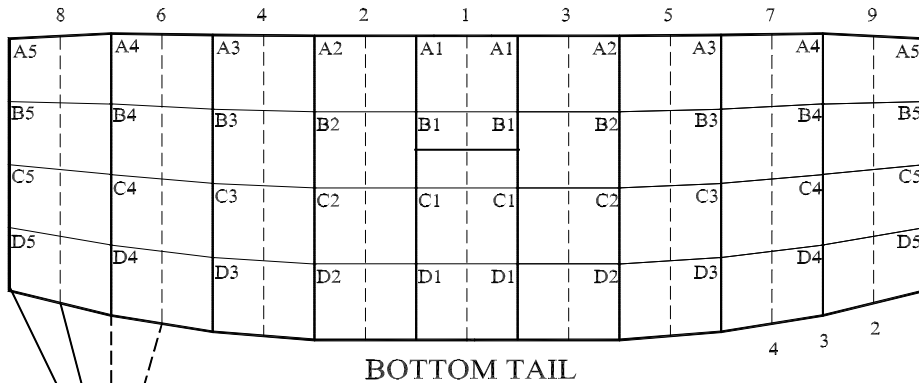




Performance Designs, Inc.
 1300 E. Int'l Speedway Blvd
 DeLand FL 32724
 Telephone: 386-738-2224
 Fax: 386-734-8297

LINE TRIM CHART FOR SILHOUETTE 135 - 170



	SI-135	SI-150	SI-170
A1	122 1/2	129	137 1/8
A1-B1	2 3/8	2 1/2	2 1/2
A1-C1	8 3/8	8 7/8	9 1/2
A1-D1	16 1/4	17 1/4	18 1/4
A2	122 1/2	129	137 1/8
A2-B2	2 3/8	2 1/2	2 1/2
A2-C2	8 1/4	8 3/4	9 3/8
A2-D2	16 1/8	17 1/8	18 1/4
A3	122 1/2	129	137 1/8
A3-B3	2 1/4	2 3/8	2 1/2
A3-C3	8	8 3/8	9 1/8
A3-D3	15 3/4	16 5/8	17 3/4
A4	122 3/8	128 7/8	137
A4-B4	2 1/8	2 1/4	2 1/4
A4-C4	7 1/4	7 3/4	8 1/4
A4-D4	14 1/2	15 3/8	16 3/8
A5	122 1/4	128 3/4	136 7/8
A5-B5	2 1/8	2 1/4	2 1/4
A5-C5	6 3/8	6 3/4	7 1/4
A5-D5	12 5/8	13 3/8	14 1/4
LST	91 1/2	96 1/2	102 1/2
A5-UST1	13 5/8	13 7/8	15 1/2
A5-UST2	11 5/8	11 7/8	13
A5-UST3	10 1/4	10 7/8	11 1/2
A5-UST4	10 1/4	10 7/8	11 1/2
B STAB SLK	1/2	1/2	1/2
C STAB SLK	1	1	1
D STAB SLK	1 1/2	1 1/2	1 1/2
BK-TOG	16 3/4	17 3/8	18 1/2
Channel Slider (FP/FS fabric)	20" Chord	20" Chord	20" Chord
	31" Span	31" Span	31" Span

*Due to development methodology, the finished BK-TOG dimensions may not scale