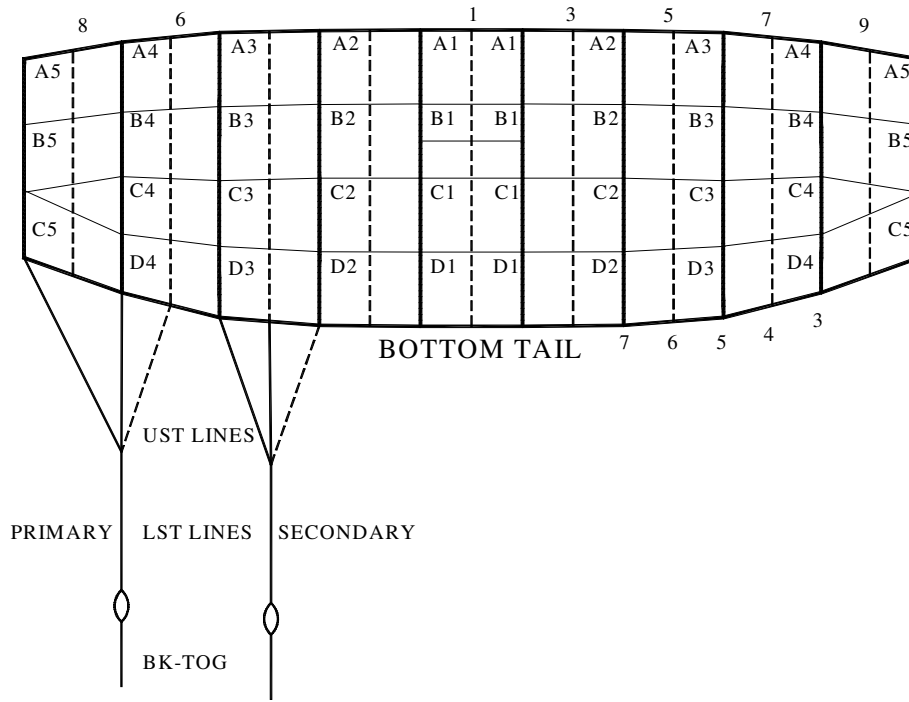




Performance Designs, Inc.
 1300 E Int'l Speedway Blvd
 DeLand FL 32724
 Telephone: 386-738-2224
 Fax: 386-734-8297

LINE TRIM CHART FOR SIGMA 370 - 395



	SG-370	SG-395
A1	199 7/8	206 5/8
A1-B1	5 1/2	5 5/8
A1-C1	15 5/8	16 1/8
A1-D1	28 1/4	29 1/8
A2	199 7/8	206 5/8
A2-B2	5 1/2	5 5/8
A2-C2	15 1/2	16 1/8
A2-D2	28 1/8	29
A3	201	207 7/8
A3-B3	4 1/2	4 5/8
A3-C3	14 3/8	14 7/8
A3-D3	25 1/2	26 1/4
A4	201 1/2	208 3/8
A4-B4	4 1/8	4 1/8
A4-C4	12 1/2	12 7/8
A4-D4	21 3/4	22 3/8
A5	201 7/8	208 3/4
A5-B5	4 3/4	4 3/4
A5-C5	13	13 1/2
LST-P	137 1/8	143 1/4
A5-UST1	9 1/2	11 5/8
A5-UST3	10	12 1/8
A5-UST4	15 1/8	13 3/8
LST-S	142 5/8	149 1/4
A5-UST5	14 1/2	17 3/8
A5-UST6	16	18 3/4
A5-UST7	21 1/8	20
B STAB SLK	1	1
C STAB SLK	1 1/2	1 1/2
BK-TOG-P*	18	18 1/2
BK-TOG-S*	19	18 3/4
Dome Slider w/ 4 Grommets	19 1/2" Chord 54" Span	19 1/2" Chord 54" Span

*Due to development methodology, the finished BK-TOG dimensions may not scale