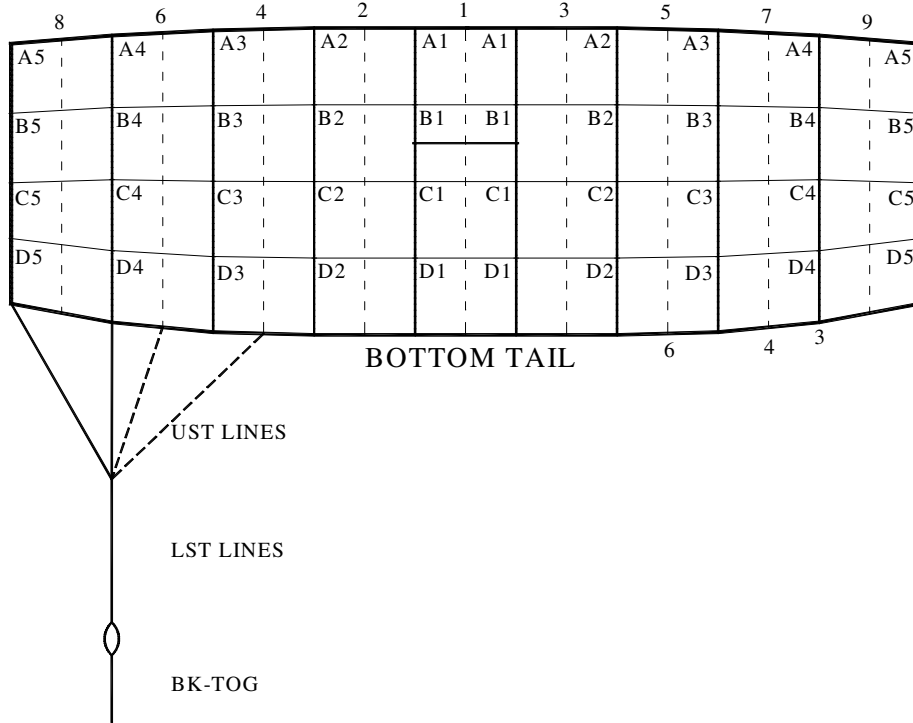




Performance Designs, Inc.
 1300 E Int'l Speedway Blvd
 DeLand FL 32724
 Telephone: 386-738-2224
 Fax: 386-734-8297

LINE TRIM CHART FOR SABRE2 190 - 260



	SA-190	SA-210	SA-230	SA-260
A1	139 3/4	146 7/8	153 3/4	163 3/8
A1-B1	2 5/8	3	2 7/8	3 1/8
A1-C1	9 1/2	10	10 1/2	11 1/8
A1-D1	19 3/4	20 3/4	21 3/4	23 1/8
A2	139 3/4	146 7/8	153 3/4	163 3/8
A2-B2	2 3/4	3	3	3 1/8
A2-C2	9 1/2	10	10 1/2	11 1/8
A2-D2	19 3/4	20 3/4	21 3/4	23 1/8
A3	139 5/8	146 7/8	153 5/8	163 3/8
A3-B3	2 3/4	3 1/8	3	3 1/4
A3-C3	9 3/8	9 7/8	10 3/8	11
A3-D3	19 1/2	20 1/2	21 1/2	22 3/4
A4	139 5/8	146 3/4	153 5/8	163 1/4
A4-B4	2 7/8	3 1/8	3 1/8	3 3/8
A4-C4	9	9 3/8	9 7/8	10 1/2
A4-D4	18 5/8	19 5/8	20 1/2	21 3/4
A5	139 1/2	146 5/8	153 7/8	163 1/8
A5-B5	2 3/4	3	2 3/4	3 3/8
A5-C5	8 1/4	8 5/8	8 5/8	9 5/8
A5-D5	16 7/8	17 3/4	18 1/4	19 3/4
LST	100 3/4	105 5/8	110 1/4	117
A5-UST1	9 3/8	9 5/8	9 1/2	10 1/4
A5-UST3	7 3/8	7 5/8	7 1/2	8
A5-UST4	8 5/8	8 7/8	8 3/4	9 3/8
A5-UST6	12 3/8	12 7/8	12 7/8	13 7/8
B STAB SLK	1/2	1/2	1/2	1/2
C STAB SLK	1	1	1	1
D STAB SLK	1 1/2	1 1/2	1 1/2	1 1/2
BK-TOG	26 1/8	27 3/8	28 1/4	30
Channel Slider	26" Chord	26" Chord	26" Chord	26" Chord
	31" Span	31" Span	31" Span	31" Span

*Due to development methodology, the finished BK-TOG measurements may not scale