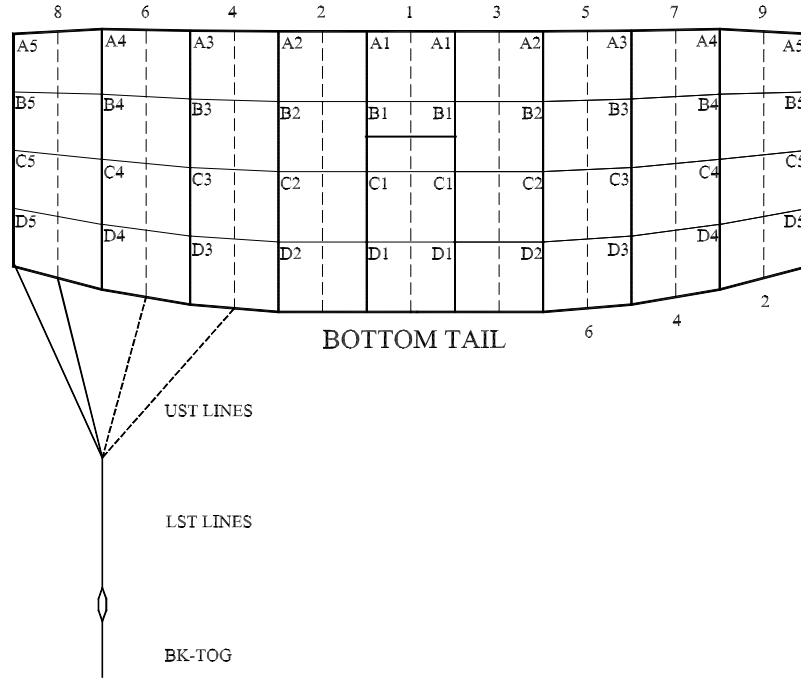




Performance Designs, Inc
 1300 E Int'l Speedway Blvd
 DeLand FL 32724
 Telephone: 386-738-2224
 Fax: 386-734-8297

**LINE TRIM CHART
 FOR**

NAVIGATOR 200 - 300



	NA-200	NA-220	NA-240	NA-260	NA-280	NA-300
A1	148 1/2	155 5/8	160 7/8	164 1/8	167 1/8	170 1/8
A1-B1	2 3/4	3	3	3 1/8	3 1/4	3 3/8
A1-C1	9 7/8	10 3/8	11	11 1/2	11 7/8	12 3/8
A1-D1	19 1/2	20 5/8	21 5/8	22 5/8	23 1/2	24 1/2
A2	148 1/2	155 5/8	160 7/8	164 1/8	167 1/8	170 1/8
A2-B2	2 3/4	3	3	3 1/8	3 1/4	3 3/8
A2-C2	9 7/8	10 3/8	10 7/8	11 3/8	11 7/8	12 3/8
A2-D2	19 1/2	20 5/8	21 5/8	22 1/2	23 1/2	24 3/8
A3	148 3/8	155 5/8	160 7/8	164 1/8	167 1/8	170 1/8
A3-B3	2 5/8	2 7/8	3	3 1/8	3 1/8	3 1/4
A3-C3	9 1/2	10	10 1/2	11	11 1/2	12
A3-D3	19	20	21	21 7/8	22 7/8	23 3/4
A4	148 1/4	155 1/2	160 3/4	164	167	170
A4-B4	2 1/2	2 5/8	2 3/4	2 3/4	3	3
A4-C4	8 3/4	9 1/8	9 5/8	10	10 1/2	10 7/8
A4-D4	17 1/2	18 1/2	19 3/8	20 1/4	21	21 7/8
A5	148 1/8	155 3/8	160 5/8	163 7/8	166 7/8	169 7/8
A5-B5	2 3/8	2 5/8	2 5/8	2 3/4	2 7/8	3
A5-C5	7 5/8	8 1/8	8 1/2	8 7/8	9 1/4	9 5/8
A5-D5	15 3/8	16 1/4	17	17 3/4	18 1/2	19 1/4
LST	109 7/8	114 3/4	118 1/4	118	121 1/4	125 3/8
A5-UST1	13 3/8	13 5/8	14 1/4	13 1/8	15 5/8	18
A5-UST2	13 3/8	13 5/8	14 1/4	13 1/8	15 5/8	18
A5-UST4	13 3/8	13 5/8	14 1/4	13 1/8	15 5/8	18
A5-UST6	13 3/8	13 5/8	14 1/4	13 1/8	15 5/8	18
B STAB SLK	1/2	1/2	1/2	1/2	1/2	1/2
C STAB SLK	1	1	1	1	1	1
D STAB SLK	1 1/2	1 1/2	1 1/2	1 1/2	1 1/2	1 1/2
BK-TOG*	19 7/8	20 7/8	23 3/4	24 5/8	23 3/8	25 1/4
Standard Slider	23" Chord 31" Span	23" Chord 31" Span	23" Chord 31" Span	23" Chord 31" Span	26" Chord 31" Span	26" Chord 31" Span

*Due to development methodology, the finished BK-TOG dimensions may not scale