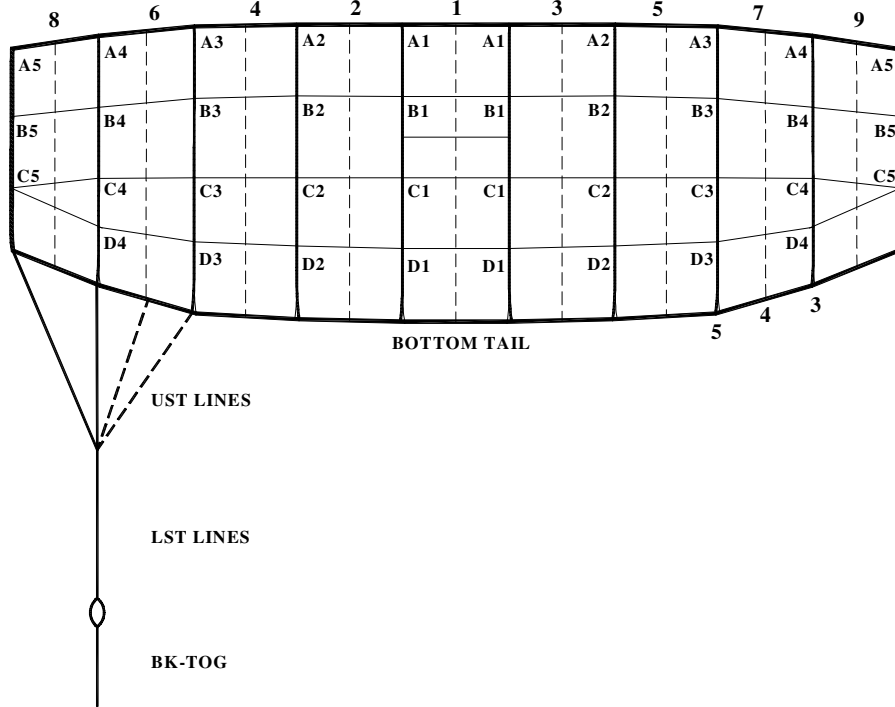




Performance Designs, Inc  
 1300 E Int'l Speedway Blvd  
 DeLand FL 32724  
 Telephone: 386-738-2224  
 Fax: 386-734-8297

**LINE TRIM CHART**  
**FOR**

**KATANA 083 - 170**



	KA-083	KA-089	KA-097	KA-107	KA-120	KA-135	KA-150	KA-170
A1	96 1/2	99 5/8	103 1/2	108 1/4	114 1/8	120 1/8	126 1/8	133 3/4
A1-B1	2 1/8	2 1/4	2 1/4	2 3/8	2 1/2	3 3/8	3 1/2	3 3/4
A1-C1	7 5/8	7 7/8	8 1/4	8 5/8	9 1/4	10 1/8	10 5/8	11 3/8
A1-D1	14 1/8	14 5/8	15 3/8	16 1/8	17 1/8	18 1/2	19 5/8	20 7/8
A2	96 1/2	99 1/2	103 1/2	108 1/4	114 1/8	120 1/8	126 1/4	133 3/4
A2-B2	2	2 1/8	2 1/4	2 1/4	2 3/8	3 1/4	3 3/8	3 5/8
A2-C2	7 5/8	7 7/8	8 1/4	8 5/8	9 1/8	10	10 5/8	11 1/4
A2-D2	13 3/4	14 1/4	14 7/8	15 5/8	16 5/8	18	19	20 1/4
A3	96 3/8	99 1/2	103 1/2	108 1/4	114 1/8	120 1/4	126 3/8	134
A3-B3	2 1/8	2 1/4	2 1/4	2 3/8	2 1/2	3 1/8	3 1/4	3 1/2
A3-C3	7 3/8	7 5/8	8	8 3/8	8 7/8	9 5/8	10 1/4	10 7/8
A3-D3	13 1/4	13 3/4	14 3/8	15 1/8	16 1/8	17 1/2	18 1/4	19 1/2
A4	96 3/8	99 1/2	103 1/2	108 1/4	114 1/4	120 5/8	126 5/8	134 3/8
A4-B4	2 3/8	2 3/8	2 1/2	2 5/8	2 3/4	3 1/8	3 3/8	3 1/2
A4-C4	6 3/4	7	7 3/8	7 3/4	7 5/8	8 7/8	9 3/8	10
A4-D4	11 1/8	11 1/2	12	12 5/8	12 3/4	14 3/8	15 1/4	16 1/4
A5	96 3/8	99 5/8	103 5/8	108 1/2	114 1/2	120 7/8	127 1/8	134 7/8
A5-B5	2 1/2	2 1/2	2 5/8	2 3/4	3	3 3/8	3 1/2	3 3/4
A5-C5	6 3/4	7	7 1/4	7 5/8	8 1/8	8 3/4	9 1/4	9 7/8
LST	68 3/4	71	74	78	82 3/8	80 5/8	81 3/4	85 7/8
A5-UST1	9 1/4	9 3/4	10 1/4	11 3/8	12 1/4	6 5/8	4 3/8	7 7/8
A5-UST3	8 1/8	8 5/8	9 1/8	10 1/8	10 7/8	9	6 7/8	7 5/8
A5-UST4	8 7/8	9 3/8	9 7/8	11	11 3/4	11 5/8	9 5/8	9
A5-UST5	10 3/8	10 3/4	11 3/8	12 1/2	13 3/8	16 1/8	14 1/4	12 5/8
B STAB SLK	1/2	1/2	1/2	1/2	1/2	1/2	1/2	1/2
C STAB SLK	1	1	1	1	1	1	1	1
BK-TOG*	14 3/4	15 1/4	15 7/8	14 5/8	15 1/2	17 5/8	19	20 1/2
Channel Slider	20" Chord 31" Span	20" Chord 31" Span	20" Chord 31" Span	20" Chord 31" Span	20" Chord 31" Span	N/A N/A	N/A N/A	N/A N/A
Dome Channel w/Mesh Panels	N/A N/A	N/A N/A	N/A N/A	N/A N/A	N/A N/A	23" Chord 42" Span	23" Chord 42" Span	23" Chord 42" Span

\*Due to development methodology, the finished BK-TOG dimensions may not scale